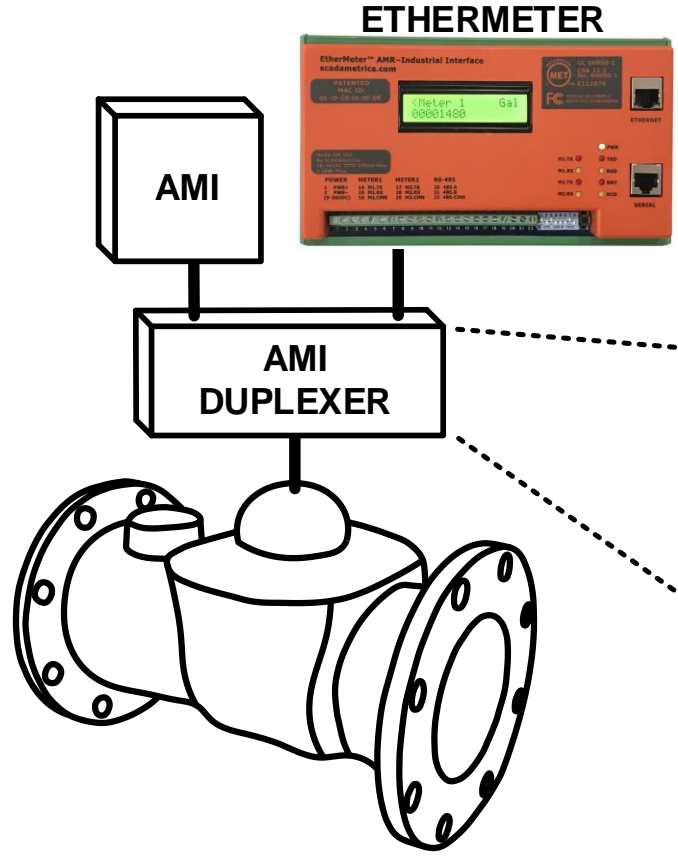




AMI Duplexer for SCADA Systems™

WALL-MOUNT VERSION



Revenue-Grade Water Meter Accuracy: Now Available to the Utility's Billing Department and SCADA System Simultaneously...

You have an AMI-capable water meter, and you are quite satisfied with its ability to transmit revenue-grade readings into your AMI system – but in certain situations, wouldn't it be useful if you could collect those same revenue-grade readings into your SCADA system, as well?

The **Model SDAW "AMI Duplexer for SCADA Systems – Wall-Mount Version"** was designed for that exact purpose!

The **AMI Duplexer** enables the splitting of AMI signals from every major AMI-capable water meter to every major AMI/AMR/Visual endpoint in the industry – including those from **Sensus, Neptune, Metron-Farnier, Kemp-Meek, Aclara, Mueller, Kamstrup, Badger, Master Meter, RG3, Zenner, Itron, Elster-AMCO, McCrometer**, and many others!

The **AMI Duplexer** maintains all the popular functionality contained within our retired **Radio-Read Filter** which led to its widespread acceptance at major water utilities throughout the United States and Canada – PLUS the additions of an attractive, compact din-rail case and a convenient removable terminal block.

It is important to note that the models **SDAW and SDA "AMI Duplexer for SCADA Systems"** are designed to only split a meter signal to a SCADAmetrics EtherMeter plus a third-party AMI device. If signal splitting to strictly non-EtherMeter devices is desired, then the **UDA "Universal Duplexer for AMI"** is the recommended signal splitter.

Are you interested in how SCADAmetrics technology can help you to eliminate pulse-counting errors and split a water meter's encoder signal to both your AMI and SCADA systems? Give us a call! We'll be glad to discuss the details!

SCADAmetrics
scadmetrics.com
Saint Louis, Missouri USA
636.405.7101

Terminal Block Hookup:

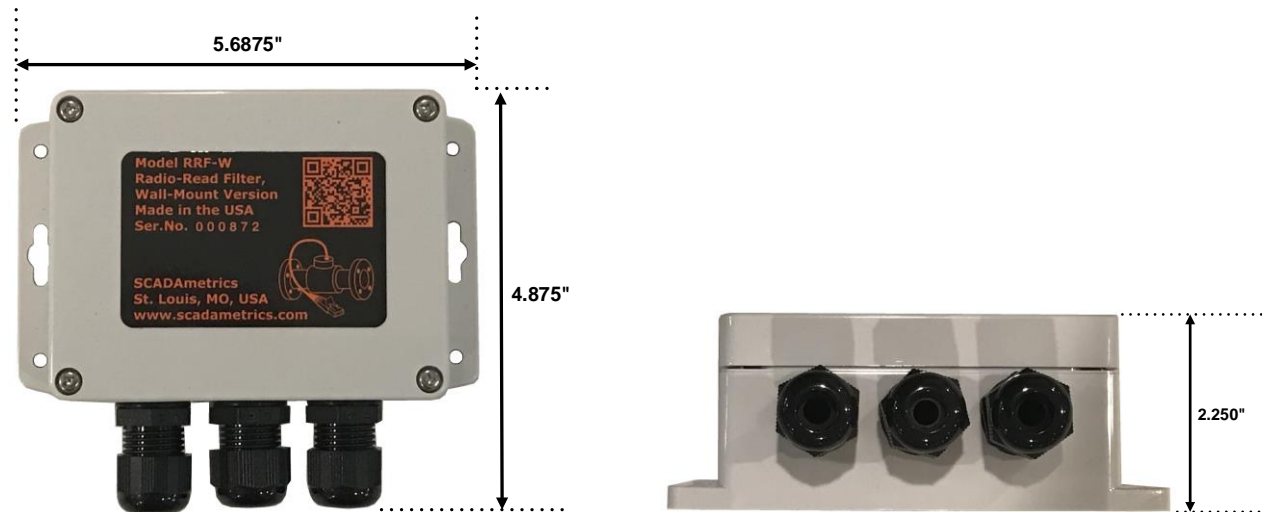
Terminal	Function	Sensus Color (Badger, Metron-Farnier, Master Meter, Kamstrup, Mueller, Zenner, RG3, Aclara)	Neptune Color	Elster Color
1	EtherMeter/SCADA Clock	Red	Black	Wht Grn
2	EtherMeter/SCADA Data	Green White	Red	Red
3	EtherMeter/SCADA Ground	Black	Green	Black
4	Water Meter Clock	Red	Black	Wht Grn
5	Water Meter Data	Green White	Red	Red
6	Water Meter Ground	Black	Green	Black
7	AMI Clock	Red	Black	Wht Grn
8	AMI Data	Green White	Red	Red
9	AMI Ground	Black	Green	Black
10	EtherMeter/SCADA Control	Blue*	Blue*	Blue*

*Blue is Suggested, But Any Color Wire Can Be Used.

Specifications:

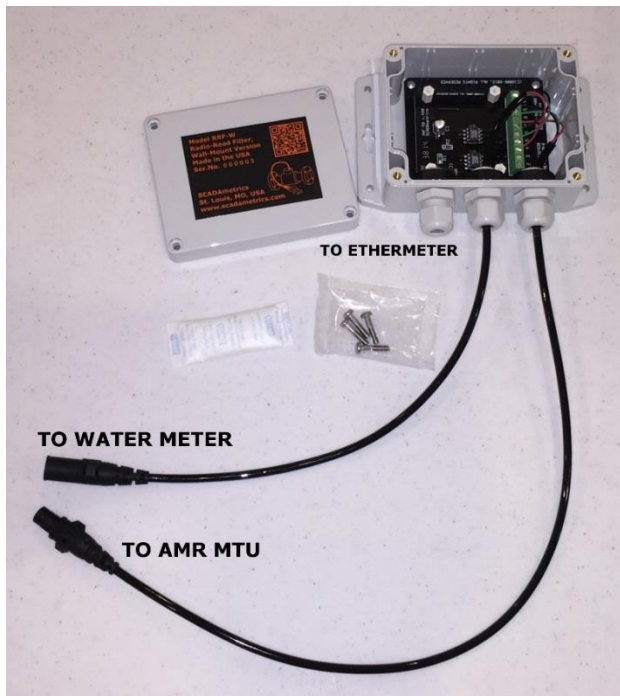
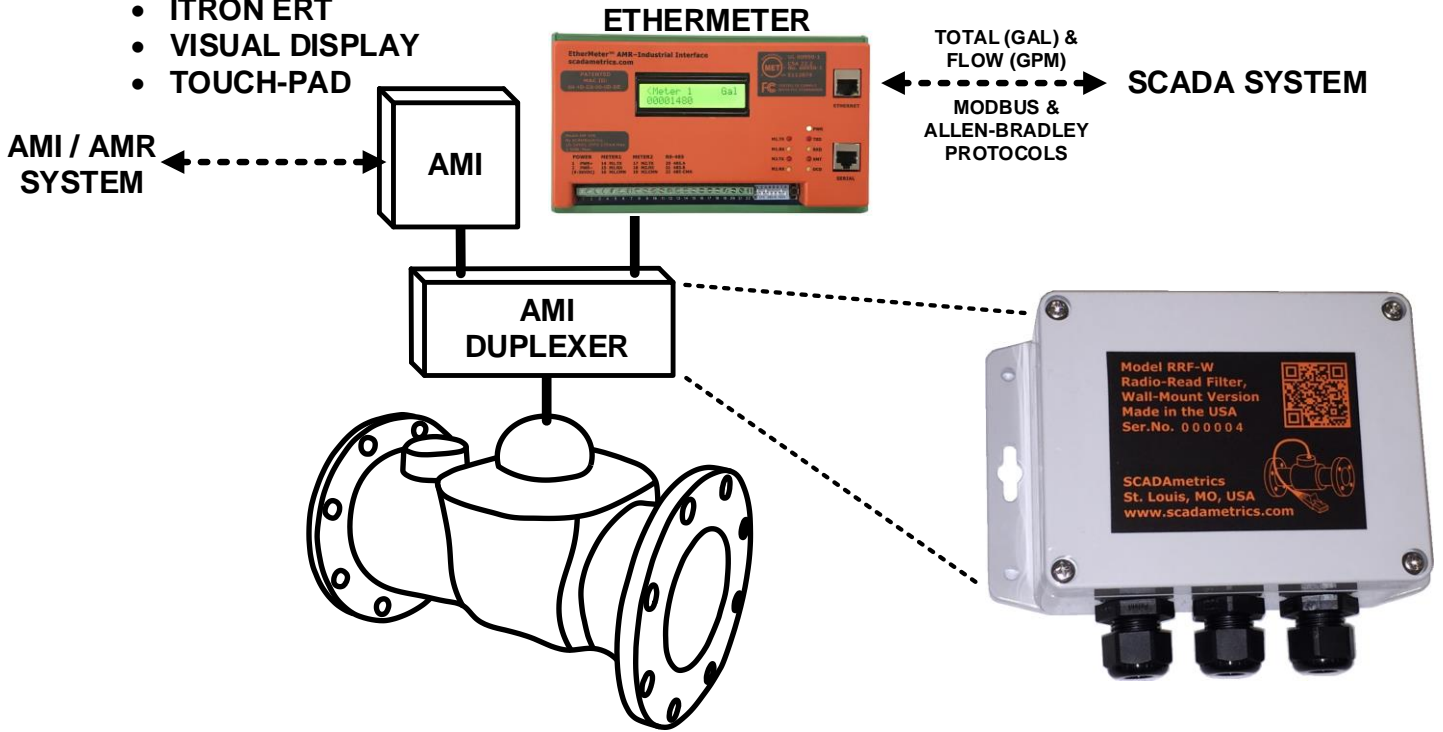
Dimensions:	5.6875" x 4.875" x 2.25"
Weight:	10.4 Ounces
Temperature:	-40C to 85C (-40°F to 185°F)
Relative Humidity:	5% to 95%, Non-Condensing
Enclosure Rating:	NEMA-4X, Not Rated for Submersion
Environmental:	ROHS-Compliant, Lead-Free
Meter Interface:	AWWA C707-05
External Power/Battery:	None Required
Manufacturing Location:	USA
Warranty:	2 Years (see www.scadametrics.com for details)

Engineering Dimensions:



Operational Illustration:

- SENSUS SMART POINT
- NEPTUNE R900
- BADGER ORION
- MASTER METER XTR
- METRON-FARNIER M2W
- ACLARA MTU
- ITRON ERT
- VISUAL DISPLAY
- TOUCH-PAD



**SCADA Duplexer, Wall-Mount-Version
With Nicor Connector Option**

In order to even further simplify installation and to minimize wiring errors, SCADAmetrics is pleased to offer a Nicor Connector Option that is useful wherever the utility-owned water meters and AMR endpoints are also outfitted with industry-standard Nicor connectors.