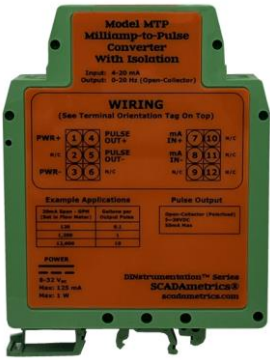
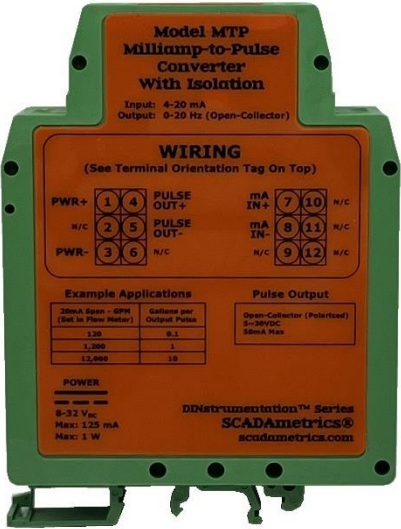




Milliamp-to-Pulse Converter

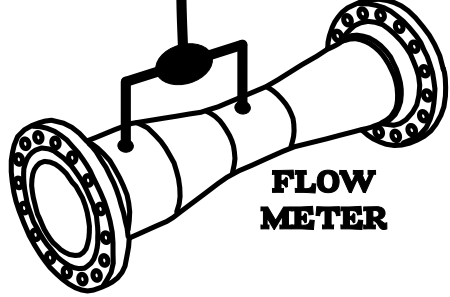
Model MTP

Building or Factory Automation Controls



Totalizable pulse (gal/m³)

4-20mA flow rate (gpm,lpm)



Translates a 4-20 Milliamp Input Signal into a Totalizer-Compatible Pulse Output!

SCADAmetrics® is pleased to introduce a new member to its DINstrumentation™ series – **Model MTP Milliamp-to-Pulse Converter!**

This new electronic signal generator for water meters accepts a 4-20 milliamp output from a flow meter and converts to a dry contact pulse (per volume) output!

Certain flow meters, such as Venturi-type meters, may only feature a 4-20mA flow output. The addition of the **model MTP Milliamp-to-Pulse Converter** enables these meters to also produce a totalizer-compatible pulse signal. The totalizer signal can be utilized for SCADA system integration, reporting, and revenue purposes.

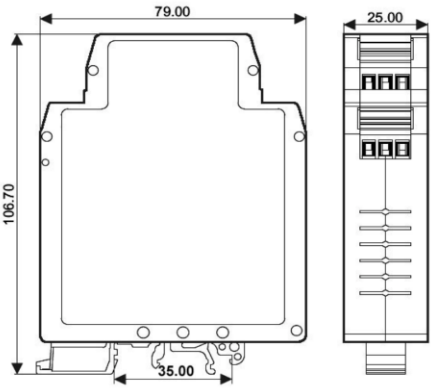
Key Features -

- Input: 4-20 mA
- Output: 0-20 Hz (Open-Collector, 50mA Max, 5-30V_{DC})
- Wide-Input Power Supply: 8-32 V_{DC}
- 3-Port Isolation: Input, Output, Power Supply
- Isolation Voltage: 2500 V_{DC} (1mA, 60s)
- Industrial Temperature Range: -45 to +85C
- 35mm Din-Rail Mount
- No Computer Setup Required!

Wiring Diagram -



Dimensions -



Are you interested in how SCADAmetrics meter technology can help you more closely monitor the flow through your water meters? Give us a call! We'll be glad to discuss the details!

SCADAmetrics
 scadametrics.com
 Wildwood, Missouri USA
 636.405.7101

Engineering Specifications -

Dimensions:	3.11 x 4.20 x 0.98 inches (79 x 106.7 x 25 mm)
Weight:	3.5 Ounces
Supply Voltage:	8-32V _{DC}
Supply Power:	1.0W
Isolation:	2500V _{RMS}
Pulse Output Type:	Solid-State, Open-Collector
Closed-Contact Max Current:	50mA
Open-Contact Min Voltage:	5V
Open-Contact Max Voltage:	30V
Output Frequency @ 4mA:	0 Hz
Output Frequency @ 20mA:	20 Hz
4-20mA Input Resistance:	100 Ohm
Terminal Connections:	Screw-Down Terminal Block, 12-26 AWG
Mounting Technique:	35mm Din-Rail
Temperature:	-40C to 85C (-40°F to 185°F)
Relative Humidity:	5% to 95%, Non-Condensing
Enclosure Rating:	Built to IP40 Specifications, Not Rated for Submersion /Outdoor Use
Manufacturing Location:	China
Warranty:	2 Years (see www.scadameetrics.com for details)

Example Flow Meter Configurations -

Gallon Registration Units		
Meter Size (in)	20mA Span (gpm)	Pulse Weight (Gallons/Pulse)
5/8 - 1	120	0.1
1.5 - 4	1,200	1
6-16	12,000	10
20+	120,000	100

Cubic Foot Registration Units		
Meter Size (in)	20mA Span (ft³/min)	Pulse Weight (ft³/Pulse)
5/8 - 1	12	0.01
1.5 - 4	120	0.1
6-16	1,200	1
20+	12,000	10

Cubic Meter Registration Units		
Meter Size (in)	20mA Span (lpm)	Pulse Weight (m³/Pulse)
5/8 - 1	1,200	0.001
1.5 - 4	12,000	0.01
6-16	120,000	0.1
20+	1,200,000	1

Example Application -

Connect a Venturi Flow Meter to a SCADA System and an AMI System

