



INTELLIGENT COMMUNICATIONS ENCODER

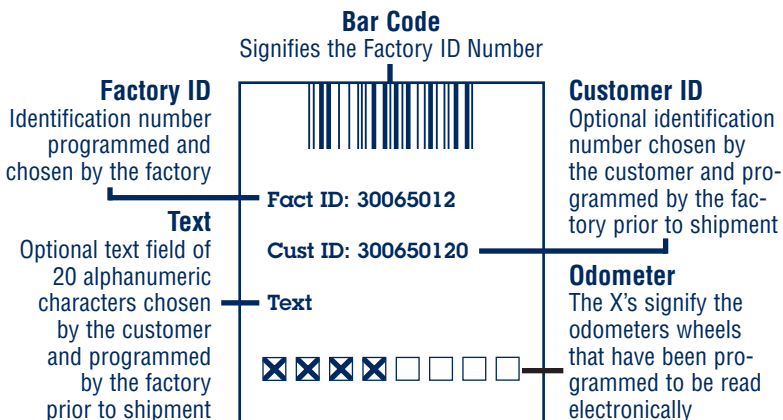
Combined Testing Pointer and Leak Detector

The registers in this carton are Intelligent Communications Encoders. **ICE** registers provide greater reliability, higher-resolution readings and other features that make them an advancement over any electronic communications registers previously available. And, they're totally compatible for use in your present Sensus AMR System.

Above and below is information about how to read the label and visually read these new registers.

For additional information, please contact your Sensus representative.

The Sensus ICE Label



Visually Reading Sensus ICE Registers

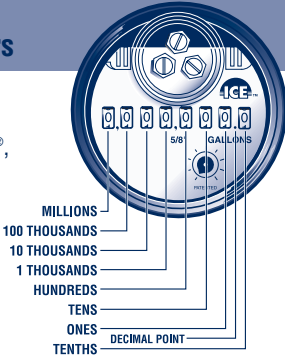
As you can see on the drawings of the register faces, **ICE** registers, whether for indicating gallons, cubic feet or cubic meters, have eight odometer wheels.

Shown below are the values the wheels represent on registers for the various types and sizes of meters listed.

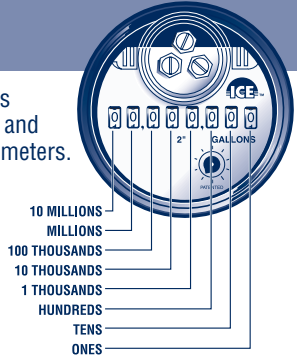
On larger meters the wheels will represent larger values.

Gallons Registers

Sensus 5/8", 3/4" and 1" SR®, SR II® meters.

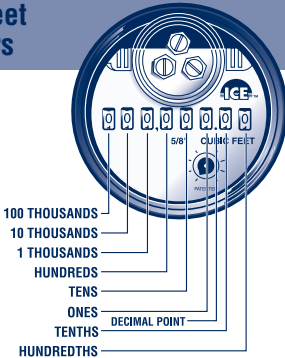


Sensus 1-1/2" and 2" SR meters.

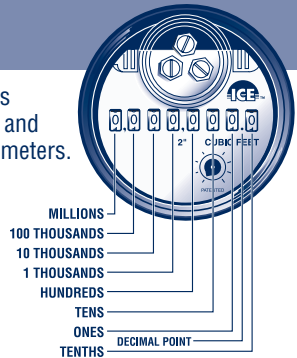


Cubic Feet Registers

Sensus 5/8", 3/4" and 1" SR, SR II meters.

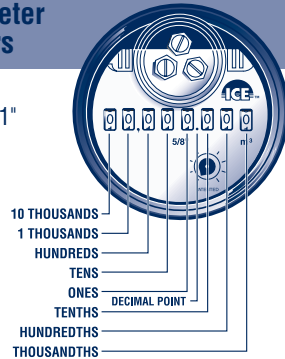


Sensus 1-1/2" and 2" SR meters.

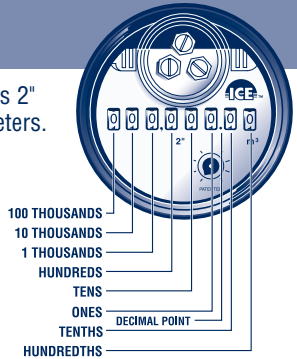


Cubic Meter Registers

Sensus 5/8", 3/4", 1" and 1-1/2" SR meters and 5/8", 3/4" and 1" SR II meters.



Sensus 2" SR meters.



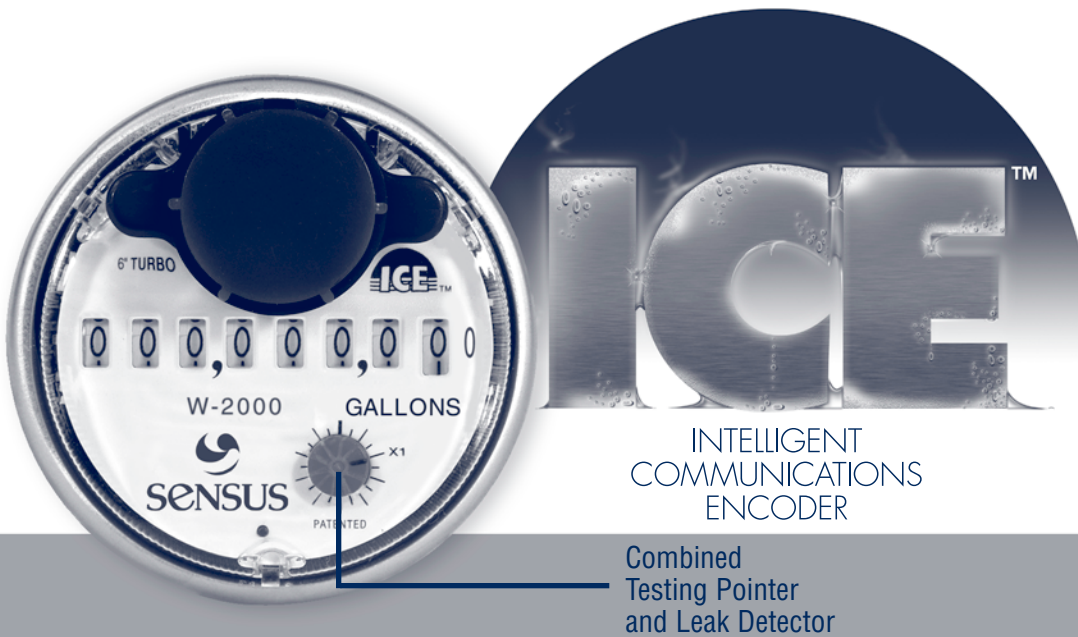
P.O. Box 487 • 450 N. Gallatin Avenue • Uniontown, PA 15401
1-800-METER-IT (1-800-638-3748)

Fax: Direct to Factory
Local: 724-439-7729 • Toll Free: 1-800-888-2403

www.sensus.com (open "North America Water")

Email: h2oinfo@sensus.com





Combined Testing Pointer and Leak Detector

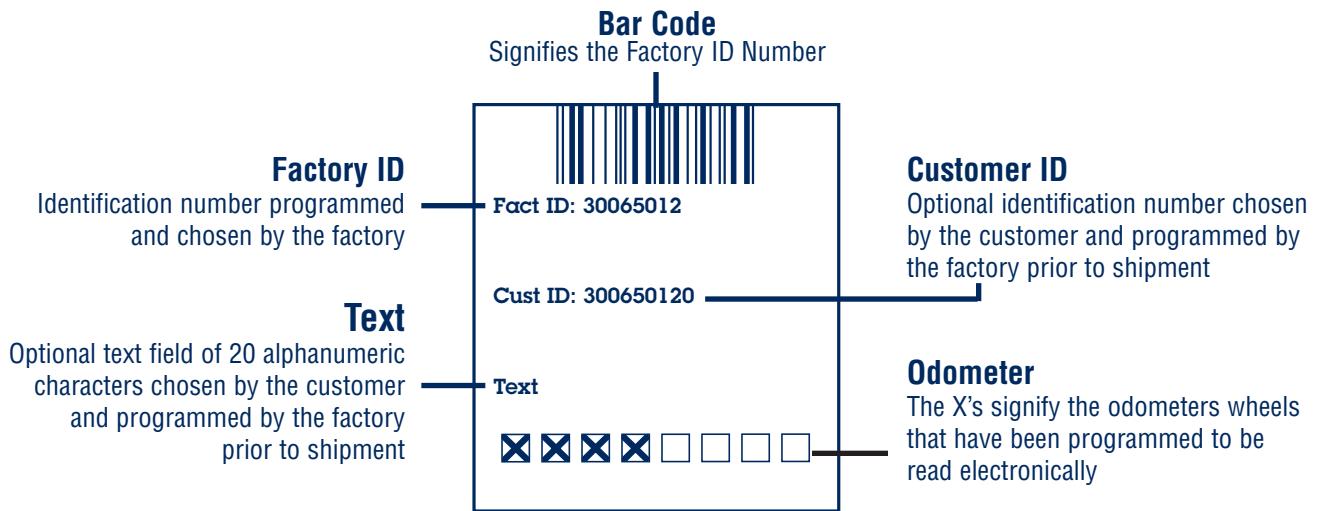
The register enclosed is an Intelligent Communications Encoder (ICE). ICE registers provide greater reliability, higher-resolution readings and other features that make them an advancement over any electronic communications registers previously available.

And, they're totally compatible for use in your present Sensus AMR System.

Above and below is information about how to read the label and visually read these new registers.

For additional information, please contact your Sensus representative.

The Sensus ICE Label



Visually Reading Sensus ICE Registers for Large Meters

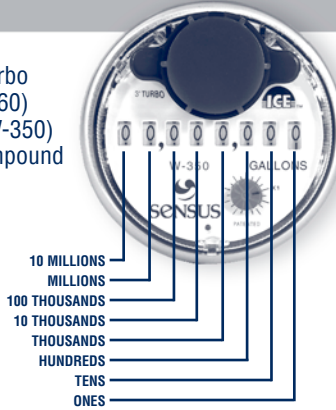
As you can see on the photographs of the register faces, **ICE** register, whether for indicating gallons, cubic feet or cubic meters, have eight odometer wheels.

Shown below are the values the wheels represent on registers for the various types and sizes of meters listed. On larger meters the wheels will represent larger values.

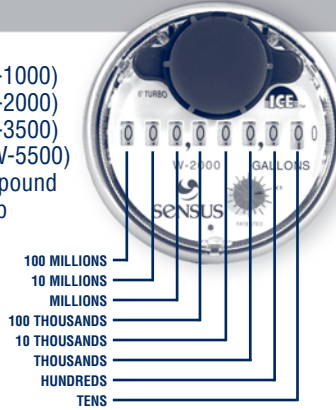
June 2021 Addendum:
For 4" and Larger Meters,
9-Digit Resolution Equates
to Single-Gallon Resolution.

Gallons Registers

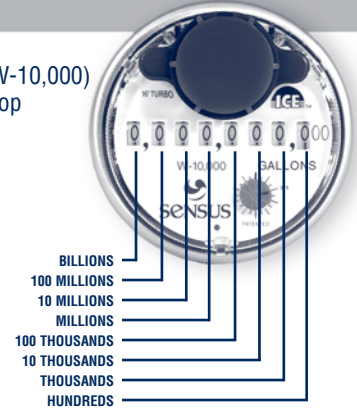
Sensus
1.5" – 2" Turbo
(W120-160)
3" Turbo (W-350)
2" & 3" Compound
3" Prop



Sensus
4" Turbo (W-1000)
6" Turbo (W-2000)
8" Turbo (W-3500)
10" Turbo (W-5500)
4" & 6" Compound
4" – 24" Prop

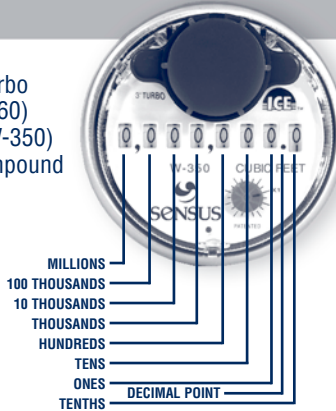


Sensus
16" Turbo (W-10,000)
30" – 36" Prop

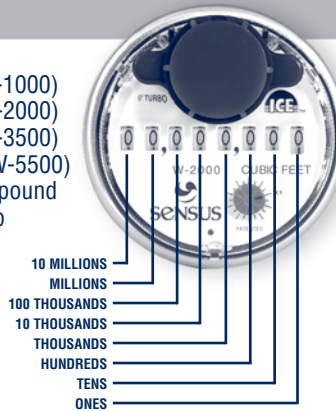


Cubic Feet Registers

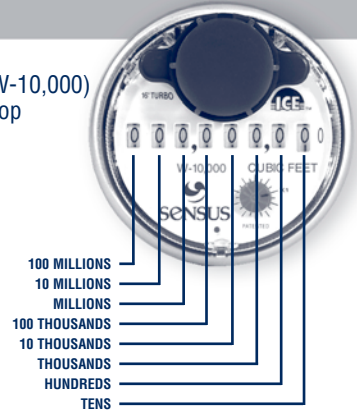
Sensus
1.5" – 2" Turbo
(W120-160)
3" Turbo (W-350)
2" & 3" Compound
3" Prop



Sensus
4" Turbo (W-1000)
6" Turbo (W-2000)
8" Turbo (W-3500)
10" Turbo (W-5500)
4" & 6" Compound
4" – 24" Prop

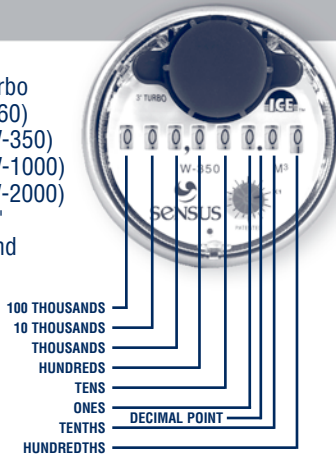


Sensus
16" Turbo (W-10,000)
30" – 36" Prop

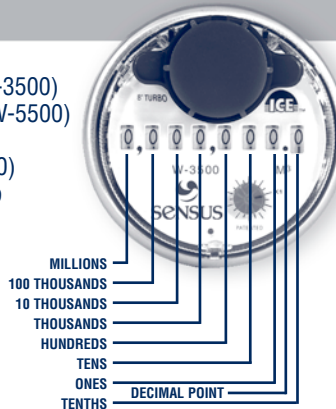


Cubic Meter Registers

Sensus
1.5" – 2" Turbo
(W120-160)
3" Turbo (W-350)
4" Turbo (W-1000)
6" Turbo (W-2000)
2" 3" 4" & 6"
Compound
3" – 4" Prop



Sensus
8" Turbo (W-3500)
10" Turbo (W-5500)
16" Turbo
(W-10,000)
6" – 36" Prop



P.O. Box 487 • 450 N. Gallatin Avenue • Uniontown, PA 15401
1-800-METER-IT (1-800-638-3748)

Fax: Direct to Factory
Local: 724-439-7729 • Toll Free: 1-800-888-2403

www.sensus.com (open "North America Water")

Email: h2oinfo@sensus.com