



# EtherMeter®

## FLOW METER GATEWAY FOR SCADA, TELEMETRY & BUILDING AUTOMATION SYSTEMS

COVERED BY US PATENT NO. 8,219,214



### 2 YEAR WARRANTY

### Revenue-Grade Flow Metering Accuracy... Now Available For Automation Systems...

SCADA, telemetry, and building automation system integrators have struggled for years to eliminate the totalization errors that resulted from using pulse-output flow meters.

With pulse technology, the most common problem is the inevitable discrepancies between the meter readings displayed within the automation system and the readings displayed on the physical meters themselves.

Today, SCADAMetrics has eliminated these errors with the introduction of the **EtherMeter®** – the metering appliance that can ensure absolute agreement between an automation system and its connected meters.

### How It Works...

The effectiveness of the EtherMeter is based upon an embrace of the latest AMR (Automatic Meter Reading) technology. Driven by the powerful SCADAmeter® protocol conversion engine, it works by translating totalization and flow rate signals from modern, encoder-based flow meters into industrial protocols such as MODBUS®, Allen Bradley DF1, and EtherNet/IP™.

Additionally, because its internal flow calculation is based upon a delta-Volume/delta-Time algorithm, the EtherMeter can also detect and report both forward and reverse flows.

The SCADA signal connection can be via 10BaseT Ethernet, RS232C serial cable, or RS485 twisted pair; and the Gateway is compatible with most Ethernet switches & routers along with most radio, fiber-optic, satellite, & telephone modems.

### Plug & Play Meter Interface...

The EtherMeter features 2 meter ports, each of which is capable of reading most absolute-encoder and pulse-output flow meters. For encoders, the EtherMeter automatically recognizes the connected meter's communication protocol, so it's truly "plug and play".

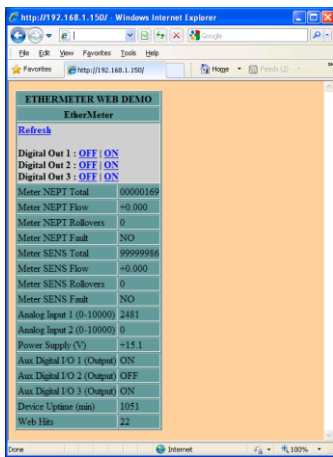
Compatible encoder-based flow meters include those produced by Sensus, Neptune, Mueller, Hersey, Siemens, Elster-AMCO, ABB, Badger, Kent, Invensys, Master-Meter, Kamstrup, RG3, Zenner, Metron-Farnier, Rockwell, Schlumberger, and others.

### Standards-Based SCADA/Meter Gateway...

Due to its incorporation of both MODBUS and Allen-Bradley communication protocol support, the EtherMeter integrates easily into the vast majority of today's modern automation systems.

On the serial port, MODBUS or DF1 can be user-selected as the active industrial protocol. On the Ethernet port, MODBUS and EtherNet/IP are both always available. For added functionality, the EtherMeter features an always-on internal web server that can be used to display meter data on remote web browsers within an intranet or even across the internet.

MODBUS, one of the flagship industrial protocols for the EtherMeter, has become a de facto standard of industrial communication protocols. Gathering momentum and support since 1979 when it was first introduced by Modicon (now a division of Schneider Electric), it is the most common means of connecting industrial electronic devices. It is openly published, royalty-free, and forms a relatively easy-to-deploy industrial network.



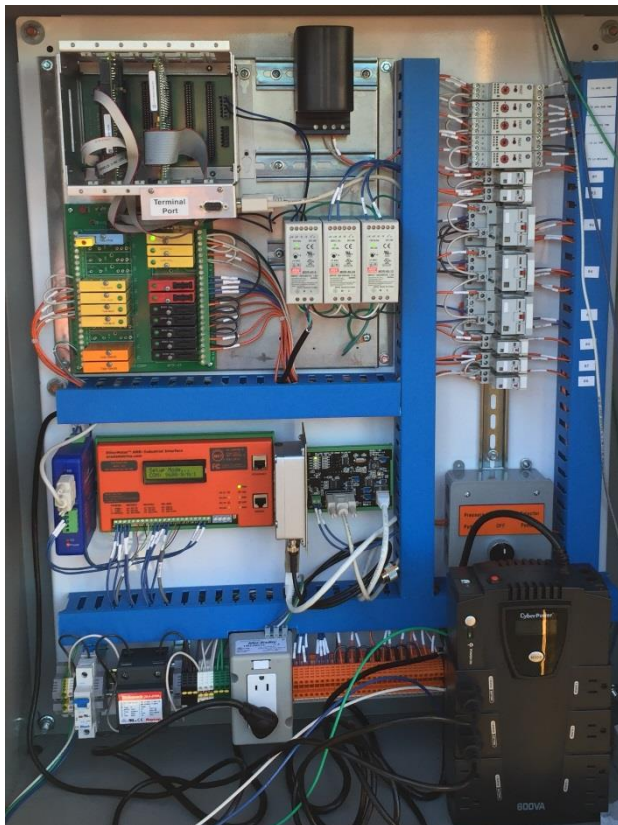
The EtherMeter features built-in web and telnet servers.

**User-Friendly Initial Setup...**

A user-friendly, centrally-manageable setup menu is available for the System Integrator via either Telnet or the serial port. Configuration requires only a notebook computer and terminal emulation software.

Setup commands are intuitive and type-written at a command prompt. Although a wide range of settings are available to the System Integrator, only a handful will typically need modification by any one particular Integrator.

As an added benefit, the EtherMeter is equipped with 5 auxiliary inputs and outputs, making it suitable for deployment as a standalone RTU at low-complexity locations, such as custody-transfer vaults or even simple pumping stations.



EtherMeter Installed in a Telemetry/SCADA Control Panel at a Water District Pumping Station.

**Meter Communications**

Meter P protocols:

- Sensus Variable-Length: 4 to 9 Digit
- Sensus Fixed-Length: 4 to 6 Digit
- Neptune E-Coder Plus: 8 to 9 Digit
- Neptune ProRead Basic: 3 to 6 Digit
- K-Frame (Elster-AMCO/ABB/Kent): 6 Digit
- Pulse (Mech. Contact, Solid-State Contact, Open-Collector), 2400 Hz Max.
- Auto-Detect
- dV/dT (Fixed dT or Fixed dV)
- Yes, Requires external RRF or TRF line filter
- Yes, Requires external RRF or TRF line filter

- Protocol Recognition:
- Flow Rate Calculation:
- Radio-Read Compatibility:
- Touch-Read Compatibility:

**Serial Communications**

Ports:

- RS-232C (EIA-561 Jack)
- RS-485 (Phoenix Terminal)
- Dip-Switch Selectable
- 300 to 115200 bps
- 8N1, 7E1, 7O1, 7N2
- Fixed RTS, Null Modem, RTS/CTS, CD-Collision Avoidance, None
- MODBUS/RTU, MODBUS/ASCII, DF1-RadioModem, DF1-FullDuplex
- ANSI, 25x80 char, 9600, 8N1

- RS-485 Termination:
- Baud:
- Port Parameters:
- Handshaking:

Industrial P protocols:

Setup Terminal:

**Ethernet Communications**

- Speed: 10 Mbps (10BaseT), Half or Full Duplex
- Addressing: DHCP or Static IP
- Web Server: Yes
- Telnet Server: Yes (1 Session)
- Ping Server: Yes
- Industrial P protocols: MODBUS/TCP (4 Sockets), EtherNet/IP (4 Sockets), MODBUS/UDP, Iridium Satellite SBD

**Mechanical/Electrical**

- Dimensions: 8.125" x 4.625" x 1.9375"
- Weight: 13.5 Ounces
- Temperature: -20C to +70C (-4F to +158F)
- Relative Humidity: 5% to 95%, Non-Condensing
- Panel Mounts: Two (2) Universal Din-Rail Clips
- LCD Display: 2x16 Character, Backlit
- Supply Voltage/Power: 10VDC to 36VDC, 2.50W max.
- Supply Current: 85 mA @ 24VDC typ. 62 mA @ 24VDC typ. w/ Backlight OFF
- Term. Blk. Conductors: 16AWG Max, 26AWG Min.
- Internal Power Efficiency: 76%, Typical
- Circuit Protection: Fused (1000mA) + 10 TVSS Diodes

**Auxiliary Inputs/Outputs**

- Analog Inputs: Two (2): 4-20mA Inputs (9.6 bit A/D), Loop Resistance: 240 Ohm, Configurable as 0-5VDC (10bit A/D) Non-Isolated.
- Aux. Digital I/O: Three (3) TTL (0-5VDC), Non-Isolated I/O. Each channel equipped w/ an internal pull-up Resistor and configurable as input or output.
- MODBUS Fn. Codes: 01 - Read Coil Status, 02 - Read Input Status, 03 - Read Holding Registers, 04 - Read Input Registers, 05 - Force Single Coil, 06 - Write Single Holding Register, 15 - Force Multiple Coils
- DF1 Fn. Codes: Protected Typed Logical Read, 3 Addresses Protected Typed Logical Write, 3 Addresses

**Standards And Regulatory Compliances**

- Safety (US/Canada/Mex) UL 60950-1 / CSA C22.2 No. 60950-1
- Emissions (US/Canada): FCC Part 15, Class A / ICES-003
- Meter Interface: AWWA C707-05
- Environmental: ROHS-Compliant, Lead-free
- Manufacturing Location: USA

**SCADAmetrics**  
**scadmetrics.com**  
 St. Louis, Missouri USA  
 (636)405-7101

# DIMENSIONAL DRAWINGS

