

Application Note 22  
Version 001  
17 Dec 2015

## Using the SCADAmetrics Radio-Read Filter and the Kemp-Meek VL9 VisuLink To Provide Shared Digital Access to a Water Meter

This document describes how to set up a water meter so that one organization can read the meter using AMR techniques and the other can read the water meter using a visual display.

This is often useful at water custody transfer points where both the water utility (the water seller) and a commercial water customer require access to the meter reading.

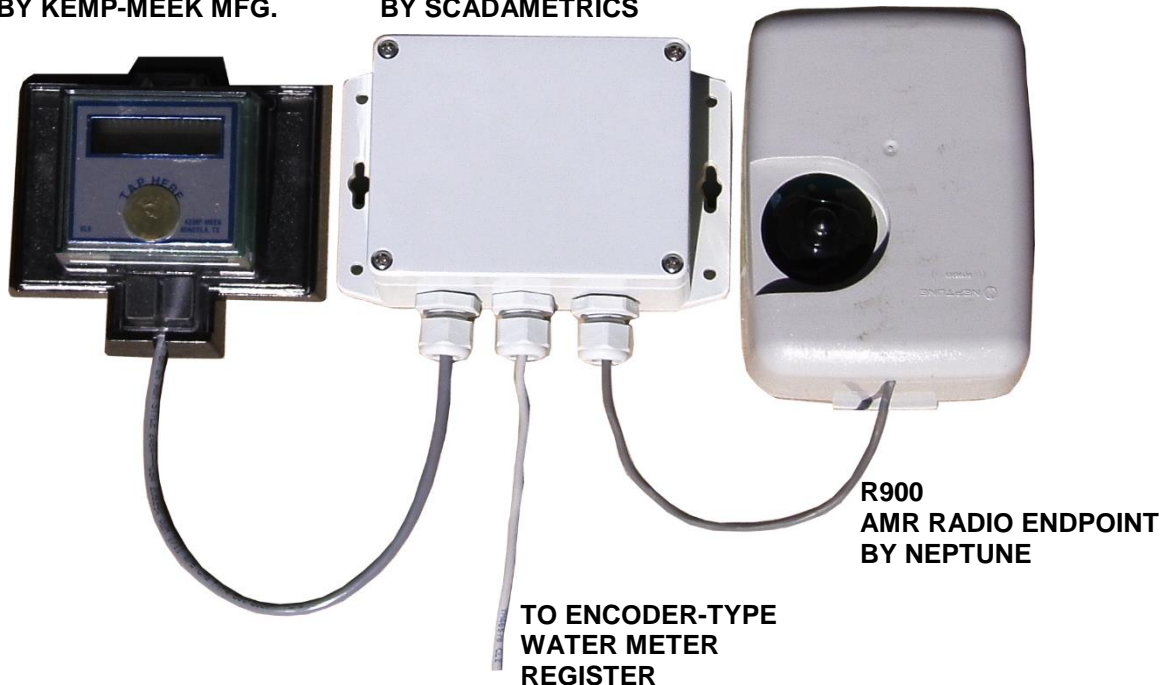


**Radio-Read Filter, Wall-Mount Version**

### SAMPLE APPLICATION:

**VL-9 VISULINK  
METER DISPLAY  
BY KEMP-MEEK MFG.**

**RRF-W  
RADIO-READ FILTER  
BY SCADAMETRICS**



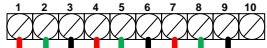
**R900  
AMR RADIO ENDPOINT  
BY NEPTUNE**

**TO ENCODER-TYPE  
WATER METER  
REGISTER**

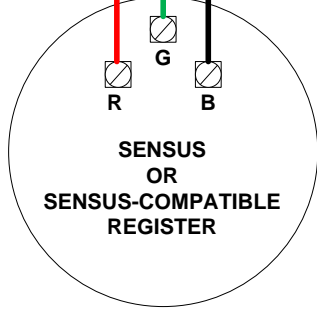
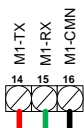
METER DISPLAY UNIT  
VISULINK BY KEMP-MEEK



RADIO-READ FILTER  
MODEL# RRF-50  
scadameetrics.com



AMR ENDPOINT

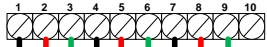


**HOOKUP FOR SENSUS (AND SENSUS-COMPATIBLE) REGISTERS**

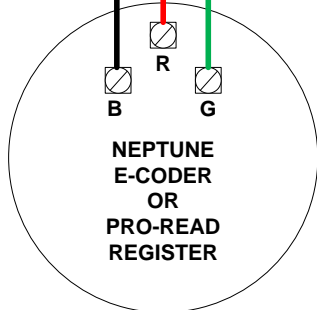
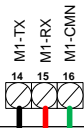
METER DISPLAY UNIT  
VISULINK BY KEMP-MEEK



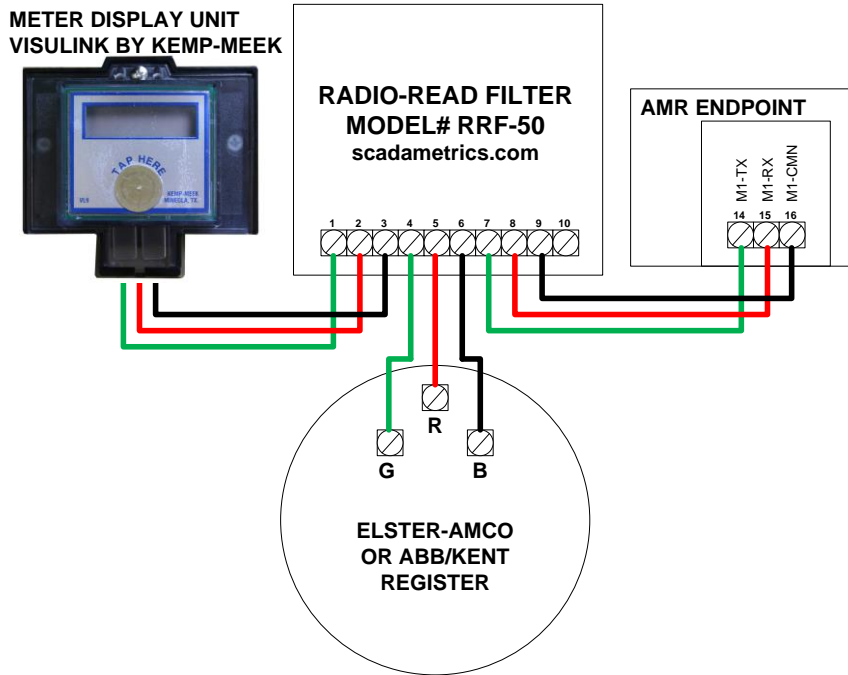
RADIO-READ FILTER  
MODEL# RRF-50  
scadameetrics.com



AMR ENDPOINT



**HOOKUP FOR NEPTUNE REGISTERS**



## HOOKUP FOR ELSTER-AMCO/ABB/KENT REGISTERS

### IMPORTANT NOTES:

1. The RRF-50 and RRF-W are designed for applications where the EtherMeter® is one of the endpoints. If an EtherMeter is not to be part of the application, it is the responsibility of the user to verify compatibility.
2. See the Compatibility Matrix at [scadametrix.com](http://scadametrix.com) for full compatibility details (Same compatibility matrix as RRF-50).
3. The RRF is rated for the following environmental conditions:  
Temperature: -30C to +85C. Relative Humidity: 5% to 95%, Non-Condensing
4. The RRF-W is not pit-compatible unless potted by user.