

FOR IMMEDIATE RELEASE:

CONTACT:

Jim Mimitz, SCADAmetrics
1133 Pond Road
Wildwood, MO 63038 USA
Voice: 636.405.7101, Fax: 314.669.6970
scadametrics.com

EtherMeter® Compatible With Magnetic Flow Meters from McCrometer, Inc.

St. Louis, Missouri
30 January 2017

SCADAmetrics is pleased to announce the verified compatibility between the EtherMeter and the entire line of Magnetic Flow Meters presently offered by McCrometer Inc. (Hemet, CA), including the UltraMag®, FPI Mag, and SPI Mag.

The UltraMag is McCrometer’s Flanged Magnetic Flow Meter, available in both 150 PSI and 300 PSI models. The FPI is a full-profile insertion magmeter, and SPI is a shorter single-profile insertion magmeter.



McCrometer UltraMag® Flanged-Type Magnetic Flow Meter

In late 2016, McCrometer Inc. introduced new communication module options for its MagMeter lines, which offer the industry-standard UI-1203 AMR protocol in 6, 8, and 9 digit formats.

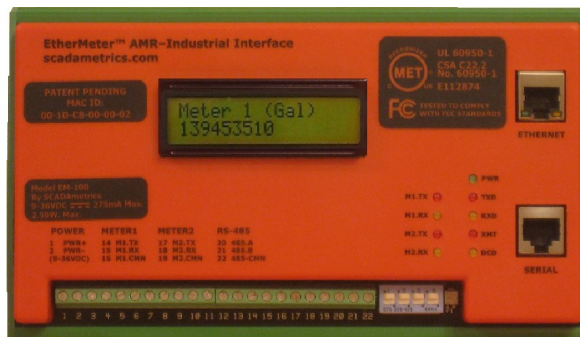
The flanged UM, long-insertion FPI, and short-insertion SPI magmeters are each tailored to different applications in the water, wastewater, and irrigation industries.

EtherMeter-compatibility means that the McCrometer magmeters may be easily connected to SCADA systems using standard industrial communication protocols, including Modbus®, Allen Bradley DF1, and Allen Bradley EtherNet/IP™. The physical connection can be via Ethernet, RS-232 Serial, or RS-485 Serial.

The EtherMeter then allows the connected SCADA system to collect NET totalization and bi-directional rate-of-flow information with revenue-grade accuracy that is suitable for inclusion within regulatory agency reports.



McCrometer FPI and SPI Insertion-Type Magnetic Flow Meters



The SCADAmetrics EtherMeter.

ABOUT SCADAmetrics –
SCADAmetrics is the manufacturer of the EtherMeter™ SCADA/Meter Gateway – the device that enables Telemetry, SCADA, & Building Automation System Integrators to read municipal and industrial water meters using MODBUS® and Rockwell Automation industrial protocols in addition to other specialized protocols.

–END–