

FOR IMMEDIATE RELEASE:

CONTACT:

Jim Mimplitz, SCADAmetrics
1133 Pond Road
Wildwood, MO 63038 USA
Voice: 636.405.7101, Fax: 314.669.6970
scadametrics.com

EtherMeter® Transmits Flow Meter Data Over The Iridium® Satellite Data Network.

St. Louis, Missouri
13 March 2014.

SCADAmetrics is pleased to announce the introduction of a new EtherMeter SCADA/Meter Gateway that has been tailored for the [Iridium® Satellite Data Network](#).

The EtherMeter was originally introduced to provide revenue-grade flow metering data to SCADA systems via industrial protocols, such as Modbus®, DF1, and EtherNet/IP™.

This newly-introduced firmware variation provides all the same metering and auxiliary I/O capacity as the standard EtherMeter – but in this case the data is actively transmitted through the Iridium Satellite Network using the Short Burst Data (SBD) protocol.

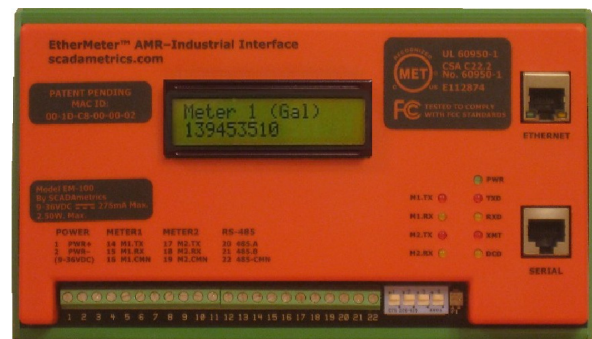


**JouBeh 9602W SBD Satellite Transceiver.
The EtherMeter Connects to the Satellite
Transceiver Via RS-232 Serial Port.**

SBD is a simple and efficient network transport technology for transmitting short data messages between equipment and centralized host computer systems. It is integrated by Iridium's Value Added Resellers, such as [JouBeh Technologies](#), into vertical market applications in industries such as Utilities, Oil & Gas, Transportation, Maritime, Aeronautical, and Government/Military.

This new EtherMeter variation is optimized for transmitting and parsing handshaking signals with the JouBeh 9602W SBD Transceiver using an extended AT command set, and provides functionality that allows the user to customize the transmission format and time interval.

Along with meter totalization and flow rate data, enhanced satellite data fields include Satellite Signal Strength Margin (dB), Battery Voltage, and Meter Tamper Detect. One of the EtherMeter digital I/O channels is dedicated to turning OFF the Satellite Modem between transmissions in order to conserve system energy consumption.



The SCADAmetrics EtherMeter.

The first units were fielded within a Water District in rural North Dakota. Value-Added Satellite SCADA Software and Services were concurrently developed for the project by [Preferred Controls Inc. \(Albany, MN\)](#), thereby providing a turnkey solution.

External Resources:

[EtherMeter/Satellite White Paper](#)
[Technical Application Note](#)
[Preferred Controls Inc.](#)
[JouBeh Technologies](#)
[Iridium](#)

ABOUT SCADAmetrics –

SCADAmetrics is the manufacturer of the EtherMeter™ SCADA/Meter Gateway – the device that enables Telemetry and SCADA System Integrators to read municipal and industrial water meters using MODBUS® and Rockwell Automation industrial protocols in addition to other specialized protocols.

–END–