

FOR IMMEDIATE RELEASE:

CONTACT:

Jim Mimplitz, SCADAmetrics
1133 Pond Road
Wildwood, MO 63038 USA
Voice: 636.405.7101, Fax: 314.669.6970
scadametrics.com

EtherMeter® Compatible With TRU/MAG™ Magnetic Flow Meter From Neptune Technology Group.

St. Louis, Missouri
24 July 2012.

SCADAmetrics is pleased to announce that its EtherMeter SCADA/Meter Gateway is verified compatible with the [TRU/MAG™ magnetic flow meter](#), manufactured by [Neptune Technology Group](#).



The TRU/MAG™ Magnetic Flow Meter From Neptune Technology Group.

The TRU/MAG, a battery-powered, flanged magnetic flow meter by Neptune, was introduced to solve a wide range of industrial and commercial custody transfer flow measurement applications.

The TRU/MAG features the ability to communicate total consumption readings via the Neptune AMR protocol – a capability that makes it compatible with both the EtherMeter and most AMR systems.

As a consequence of EtherMeter compatibility, the TRU/MAG can now be read using a wide range of industrial protocols and interfaces, including Modbus (TCP, UDP, RTU and ASCII), and Allen Bradley's DF1 and EtherNet/IP™.

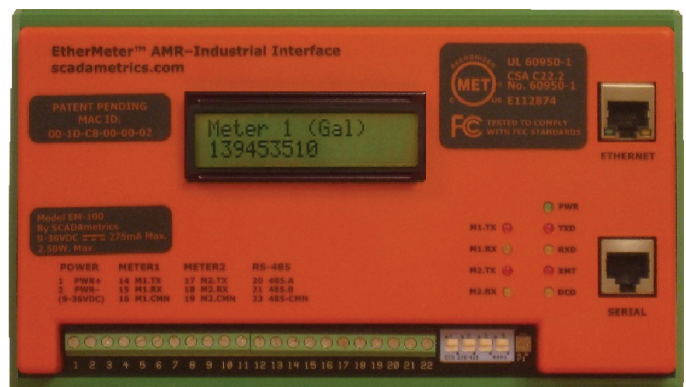
The EtherMeter's Compatibility Matrix has been updated to reflect the addition of this new meter. All testing was performed using a meter provided courtesy of Ti-Sales (Sudbury, MA).

For more information on the TRU/MAG, please contact your [local Neptune representative](#) or contact Neptune HQ: (800) 633-8754.

ABOUT SCADAmetrics –

SCADAmetrics is the manufacturer of the EtherMeter™ SCADA/Meter Gateway – the device that enables Telemetry and SCADA System Integrators to read municipal and industrial water meters using MODBUS® and Rockwell Automation industrial protocols.

–END–



The SCADAmetrics EtherMeter.