

FOR IMMEDIATE RELEASE:

CONTACT:

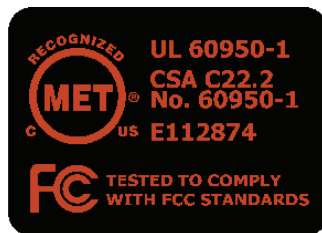
Jim Mimitz, SCADAmetrics
1133 Pond Road
Wildwood, MO 63038 USA
Voice: 636.405.7101, Fax: 314.669.6970
scadametrics.com

SCADAmetrics' SCADA/Meter Gateway Granted Safety Recognition by MET Laboratories (Baltimore, MD).

St. Louis, Missouri
22 Apr 2009

SCADAmetrics is pleased to announce that its EtherMeter™ SCADA/Meter Gateway has been granted safety recognition in the United States for UL standard 60950-1 (Safety of IT Equipment) and for the equivalent Canadian standard, CSA C22.2 No. 60950-1.

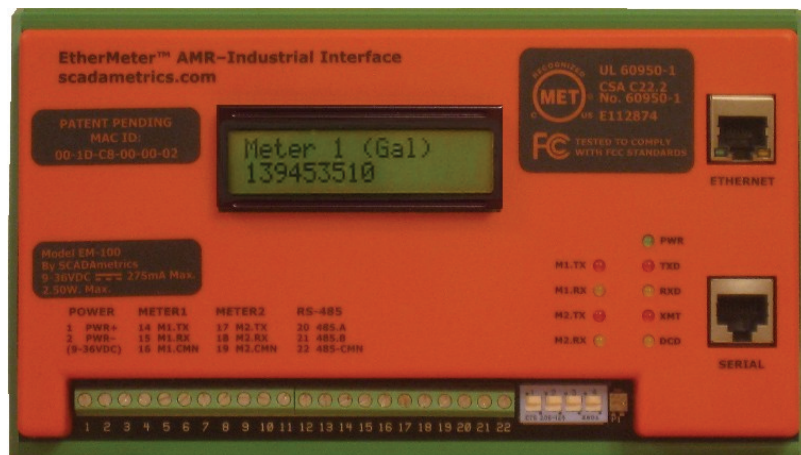
In addition to safety certification, the EtherMeter was tested for radiated emissions and deemed to be in compliance with all applicable FCC (USA) and ICES (Canada) standards, as well.



MET Laboratories, an OSHA-recognized NRTL (Nationally Recognized Testing Laboratory), performed rigorous analysis and testing of the EtherMeter at its main facility in Baltimore; and subsequently SCADAmetrics hosted a facility inspection, where its manufacturing processes were deemed to be in full conformance with NRTL-required quality control methods.

Carrying NRTL recognition means that the EtherMeter meets Underwriters Laboratories' strict standards for insulation system integrity and product safety. Local jurisdictional authorities, such as building, electrical and fire inspectors, may be reluctant to accept a product for installation within a facility unless it carries an OSHA-recognized certification, such as the MET Mark.

Additionally, NRTL-recognition facilitates the inclusion of the EtherMeter as a component in UL 508A industrial control panels, such as those within pump stations, master meter stations, and water treatment plants.



EtherMeter™ SCADA/Meter Gateway

ABOUT SCADAmetrics –

SCADAmetrics is the manufacturer of the EtherMeter™ SCADA/Meter Gateway – the device that enables Telemetry and SCADA System Integrators to read large municipal and industrial water meters using the MODBUS® and Rockwell Automation industrial protocols.

- END -