

Application Note evoQ4.1  
Version 001  
12 April 2022

## SCADA Signaling from the Honeywell evoQ4 Magnetic Flow Meter



The model [evoQ4](#) is a popular magnetic flow meter manufactured by [Honeywell](#) (formerly Elster-AMCO); and it is available in pipe diameters 1.5-12 inch.



*Jim 'Slim' Mimitz, SCADAMetrics*

### Honeywell evoQ4 Magnetic Flow Meter.

Like many AWWA-style flow meters, the evoQ4 is available with several remote signaling options, including:

- **Encoded: Sensus-Protocol 8-Digit**
- **Encoded: Sensus-Protocol 6-Digit**
- **Encoded: Elster-Protocol 6-Digit**
- **Pulse-per-Volume**
- **Encoded: Sensus-Protocol 8-Digit + Pulse-per-Volume**

Encoded and pulse signaling modules for the evoQ4 are detailed in the following Honeywell document: [HERE](#)

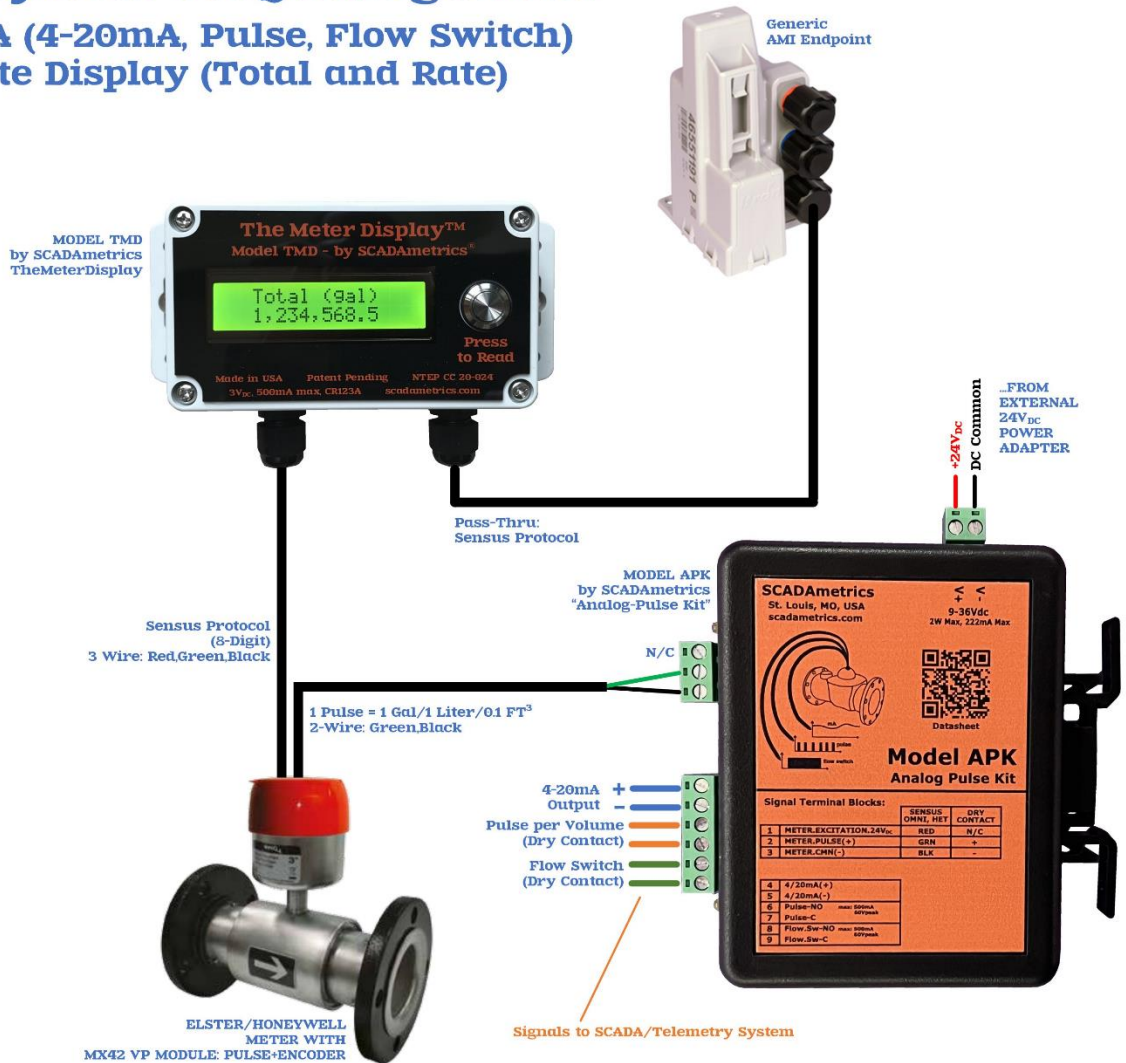
SCADAMetrics is pleased to report that our broad line of flow metering instrumentation has well-established compatibility with the Honeywell signaling modules; and it is well-poised to add value to challenging evoQ4 metering applications — especially with respect to SCADA connectivity and Visual Remote Displays.

## Concurrent SCADA, AMI, and Remote Display

The following illustrates how an evoQ4 can provide basic SCADA signaling (4-20 milliamp, pulse-per-volume, flow switch), AMI signaling (Sensus protocol), and a Remote Wall Display. Excellent for custody-transfer stations and commercial buildings. Design Basis: [Model APK Analog-Pulse Kit](#) and [Model TMD TheMeterDisplay](#):

### Concurrent Connectivity to Honeywell evoQ4 MagMeter:

- SCADA (4-20mA, Pulse, Flow Switch)
- Remote Display (Total and Rate)
- AMI

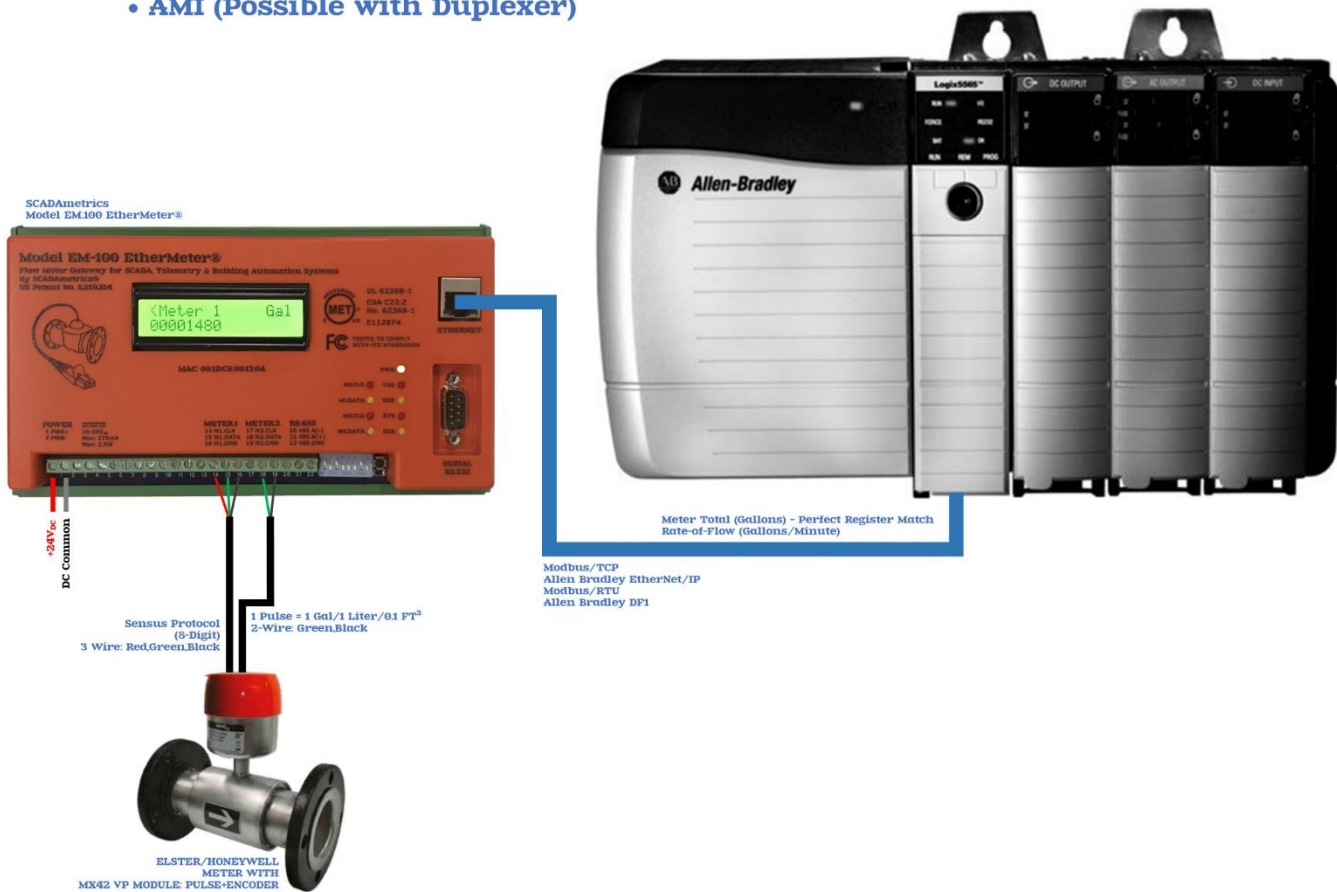


## Advanced SCADA

The following illustrates how an evoQ4 can provide advanced SCADA signaling (Modbus, Allen-Bradley EtherNet/IP). Excellent for custody-transfer pumping and valve stations where revenue-grade accuracy is of paramount importance. Also excellent for military bases and educational facilities. The addition of a model SDA or SDAW Duplexer (not shown) may be added if concurrent AMI connectivity is desired. Design Basis: [Model EM.100 EtherMeter](#):

### Advanced SCADA Connectivity to Honeywell evoQ4 MagMeter:

- SCADA (Modbus, EtherNet/IP)
- Visual Display (Total and Rate)
- AMI (Possible with Duplexer)



Basic SCADA

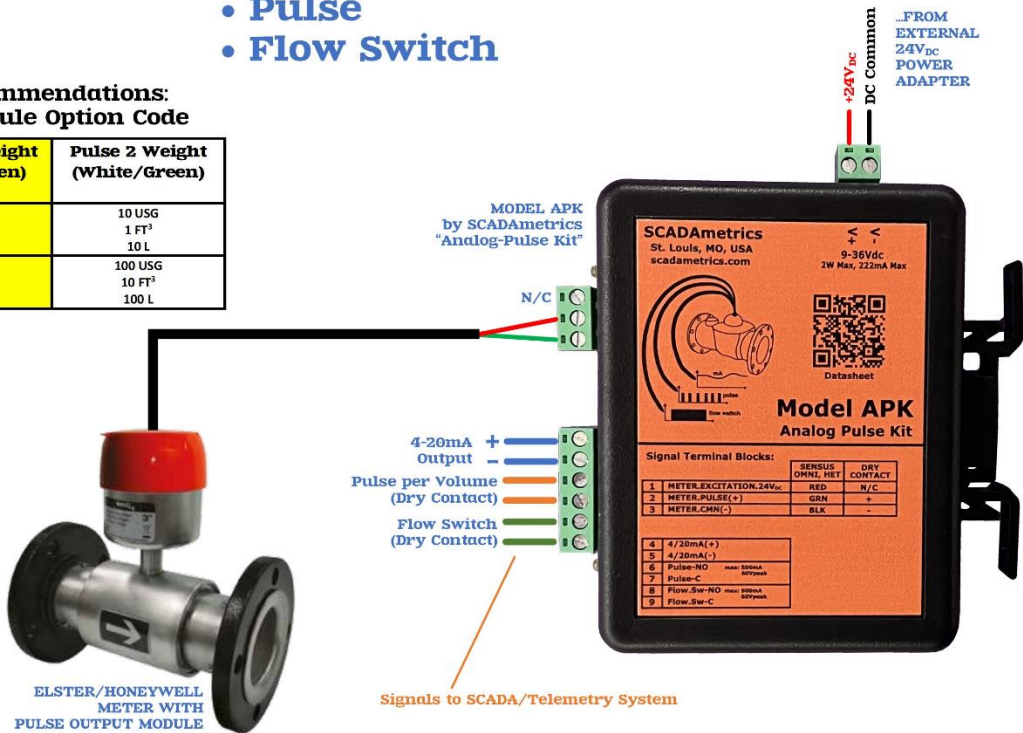
The following illustrates how an evoQ4 can provide basic SCADA signaling (4-20 milliamp, pulse-per-volume, flow switch). Excellent for well and pumping stations, as well as commercial buildings. Design Basis: [Model APK Analog-Pulse Kit](#):

Discrete SCADA Connectivity  
to Honeywell evoQ4 MagMeter:

- 4-20mA
- Pulse
- Flow Switch

SCADAmetrics Recommendations:  
Honeywell Pulse Module Option Code

evoQ4 Diameter (in)	Pulse Option Code	Pulse 1 Weight (Red/Green)	Pulse 2 Weight (White/Green)
1.5" – 4"	G	1 USG 0.1 FT <sup>3</sup> 1 L	10 USG 1 FT <sup>3</sup> 10 L
6" – 12"	D	10 USG 1 FT <sup>3</sup> 10 L	100 USG 10 FT <sup>3</sup> 100 L





Visual Batching, Visual Rate-of-Flow, plus SCADA Outputs

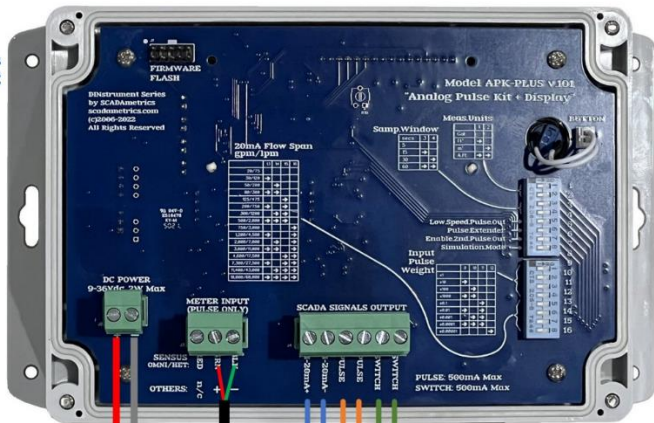
The following illustrates how an evoQ4 can provide basic SCADA signaling (4-20 milliamp, pulse-per-volume, flow switch), along with an always-ON operator flow and batch display. Excellent for well and pumping stations. Design Basis: SCADAmetrics [Model APK.PLUS Analog-Pulse Kit, Plus](#):

Discrete SCADA Connectivity + Visual Batching and Flow Display with Honeywell evoQ4 MagMeter:



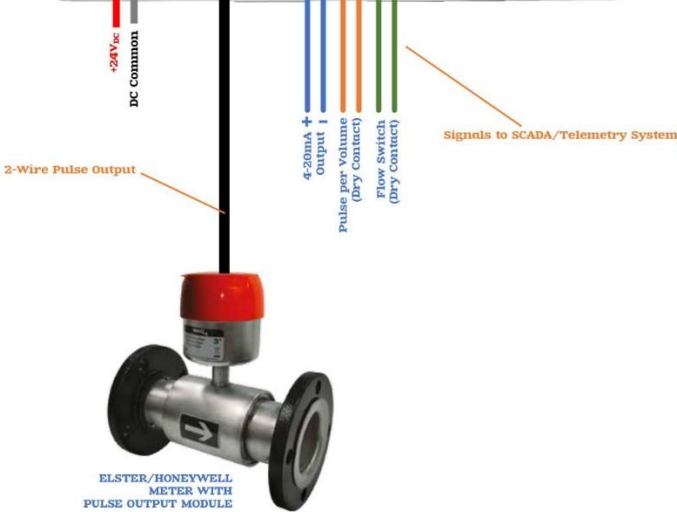
- Visual Flow
- Resettable Totalizers
- 4-20mA
- Pulse
- Flow Switch)

MODEL APK PLUS  
by SCADAmetrics  
"Analog Pulse Kit"



SCADAmetrics Recommendations:  
Honeywell Pulse Module Option Code

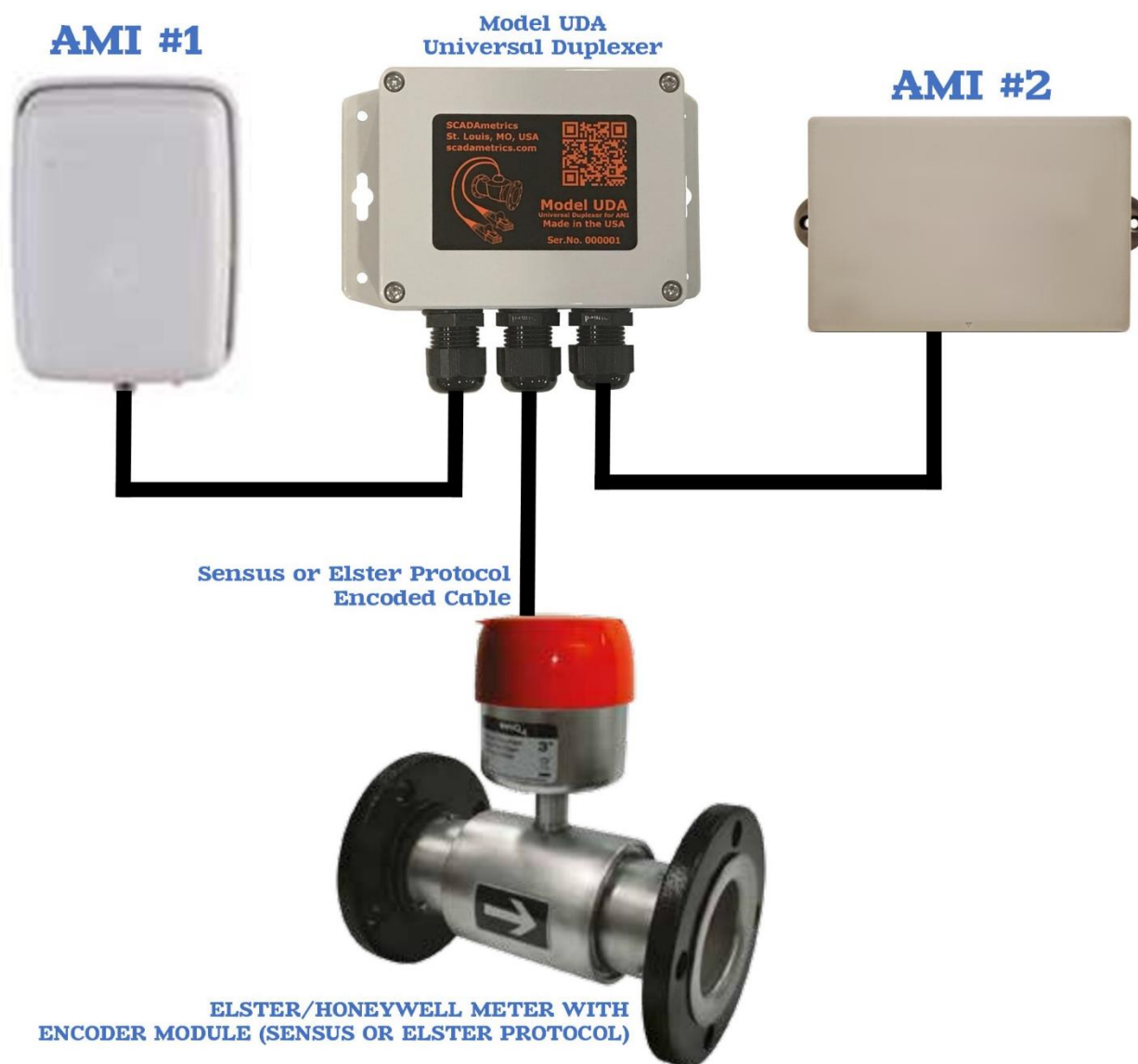
evoQ4 Diameter (in)	Pulse Option Code	Pulse 1 Weight (Red/Green)	Pulse 2 Weight (White/Green)
1.5" – 4"	G	1 USG 0.1 FT <sup>3</sup> 1 L	10 USG 1 FT <sup>3</sup> 10 L
6" – 12"	D	10 USG 1 FT <sup>3</sup> 10 L	100 USG 10 FT <sup>3</sup> 100 L



## Dual-AMI Connectivity

The following illustrates how an evoQ4 can provide AMI signaling to two separate systems. Excellent for custody-transfer stations, where both the water buyer and seller desire meter connectivity to their separate respective AMI systems. Design Basis: SCADAmetrics [Model UDA Universal Duplexer for AMI](#):

# Dual-AMI Sharing of a evoQ4 MagMeter: Custody-Transfer Metering Station



## Concurrent AMI Connectivity and Remote Visual Display

The following illustrates how a model TMD display can work with an evoQ4 to provide AMI signaling to the water utility, while concurrently providing a visual remote display whose reading is a perfect match to the evoQ4 register total. Furthermore, if an 8-digit Sensus-protocol encoded module is used, then display of rate-of-flow (gpm,lpm) is also available. Excellent for utility-owned water meters at commercial and industrial buildings, where the building owner desires a meter reading without requiring entry to a vault or confined-space. Design Basis: SCADAmetrics [Model TMD TheMeterDisplay](#):

### Concurrent Connectivity to evoQ4 MagMeter:

- Remote Display (Pushbutton for Total and Rate)
- AMI

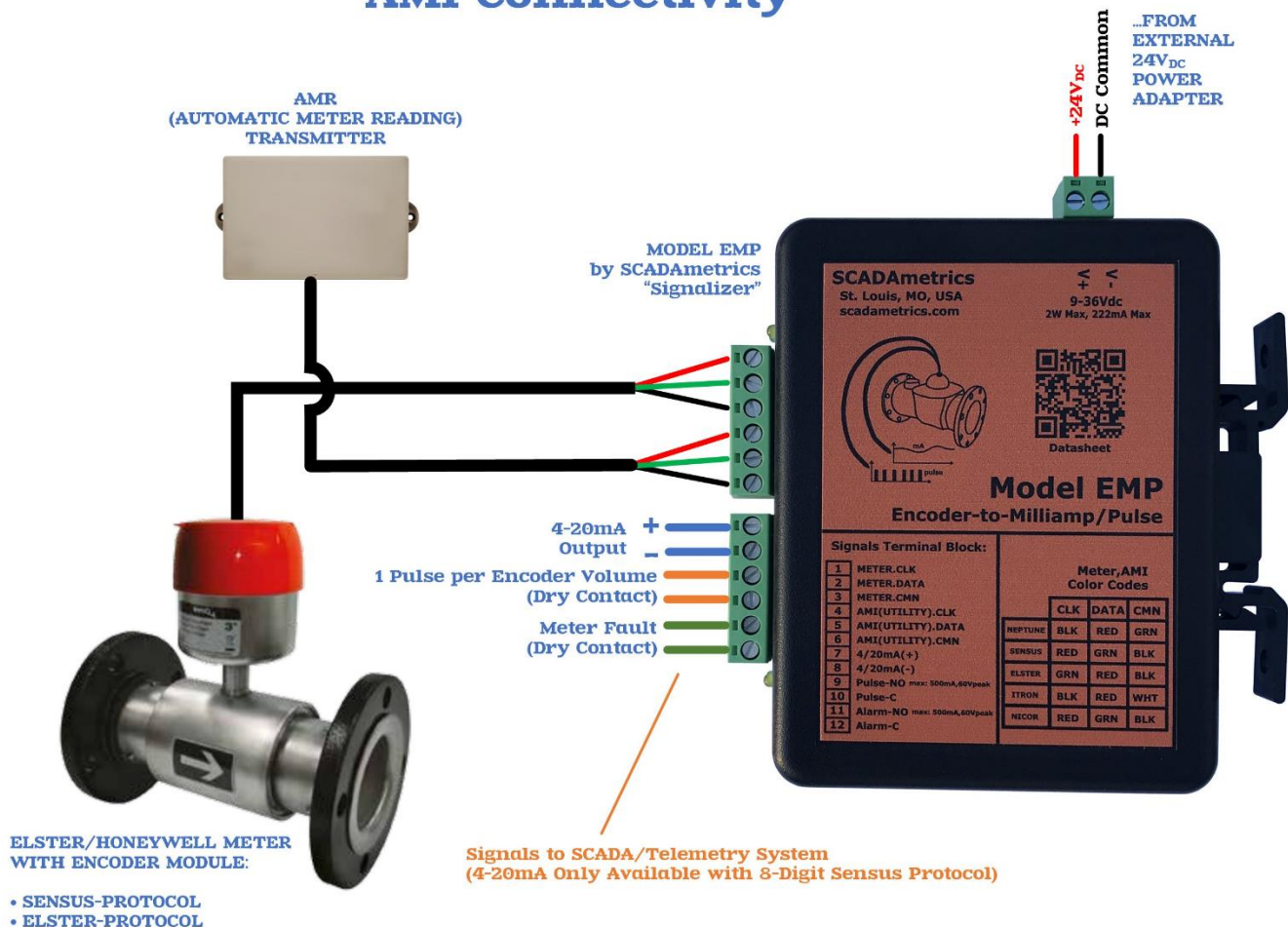


## Retrofit SCADA Connectivity to AMI-Connected Meter

The following illustrates how a model EMP Signalizer display can be applied to an evoQ4 that is outfitted with an encoded output module to provide basic SCADA signaling, while preserving the existing AMI signaling to the water utility. The SCADA signaling is in the form of a pulse-per-volume output. Furthermore, if an 8-digit Sensus-protocol encoded module is used, then a 4-20 milliamp SCADA signal is also provided. Excellent for utility-owned water meters at commercial and industrial buildings, where the building owner desires a meter reading into its BMS system, without requiring the installation of a new water meter, or without interfering with the utility's AMI system. Design Basis: SCADAmetrics [Model EMP Signalizer](#):

# Retrofit SCADA Connectivity to AMI-Connected Honeywell evoQ4 MagMeter:

Create 4-20mA and Pulse Signaling  
From AMI Encoded Signal, While Preserving  
AMI Connectivity





## **Want to Learn More?...**

Are you interested in learning more about how SCADAmetrics flow instrumentation, when paired with the Honeywell evoQ4 magnetic flow meter, can provide a wealth of value-added SCADA and visual display options? Give us a call!... We'll be glad to discuss the details!