

# Radio-Read Filter™

## SHARED ACCESS TO WATER METER READINGS



**Revenue-Grade Flow Metering Accuracy:  
Now Available to the Utility and Commercial  
Water Customer Simultaneously...**

One example is a utility-owned water meter in a high-rise office building. In such a case, the water utility requires the meter readings for billing purposes, whereas the high-rise property manager desires realtime metering data to track usage, pinpoint waste, and detect leaks. To solve this problem in the past, the property manager would have no other choice but to install a second water meter downstream from the utility-owned water meter—expensive!



**AWWA C707-05  
COMPLIANT**

**2 YEAR  
WARRANTY**

Today, the Radio-Read Filter — when installed in conjunction with the EtherMeter® — enables the utility and a commercial water customer to read the same meter simultaneously — thereby eliminating the need to install a second meter!

Using the SCADAmetrics solution, the utility continues to collect meter readings using its preferred AMR/MTU device, and the commercial water customer collects realtime meter readings and rate-of-flow using an industry-standard MODBUS® or Rockwell network protocol.

### Radio-Read Filter, Wall-Mount Version

In 2011, SCADAmetrics introduced the Radio-Read Filter — the device that enables two separate systems to read a water meter simultaneously; and it solved the challenging problem posed when both the water seller and buyer are interested in tracking water consumption.

Because this solution leverages absolute encoder technology, the water customer's readings are always an exact match to the utility's readings; and pulse-counting errors and re-synchronization corrections are eliminated.

The effectiveness, simplicity, and reliability of the Radio-Read Filter have led to its widespread acceptance at many water utilities throughout the United States and Canada.

**ETHERMETER® –  
TRANSMITS REALTIME METER READING AND  
FLOW-RATE TO COMMERCIAL CUSTOMER'S  
BAS / ENERGY MGMT / SCADA SYSTEM**



**RADIO-READ FILTER**



**UTILITY  
AMR SYSTEM**

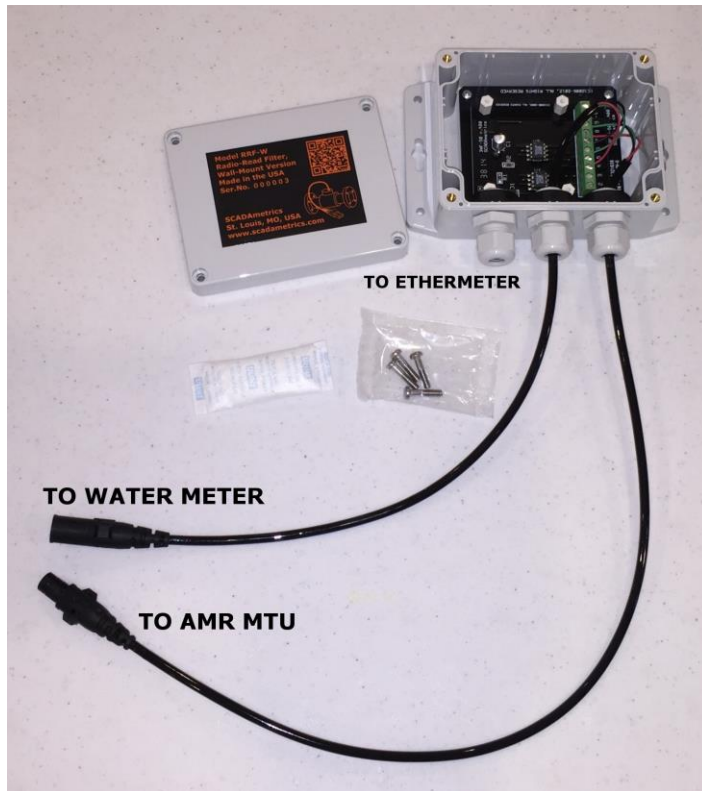


**UTILITY-OWNED  
WATER METER**



The Radio-Read Filter is offered in both a NEMA-4X enclosure and a DIN-Rail-Mount package.

In order to even further simplify installation and to minimize wiring errors, SCADAmetrics is pleased to offer a Nicor Connector Option that is useful wherever the utility-owned water meters and AMR endpoints are also outfitted with industry-standard Nicor connectors.



**Radio-Read Filter, Wall-Mount Version –  
With Nicor Connector Option**

Because it derives all necessary power from the connected EtherMeter, the Radio-Read Filter does not require batteries or an external power supply.



**Radio-Read Filter, Din-Rail-Mount Version**

When the water meter is owned by the utility, it is important to note that permission is required before connecting the water meter signal wires to the Radio-Read Filter/EtherMeter. For more information about permitting, please contact your water utility's engineering department.

Are you interested in how SCADAmetrics technology can enable your energy management system to collect data from the utility-owned water meter? Give us a call! We'll be glad to discuss the details.

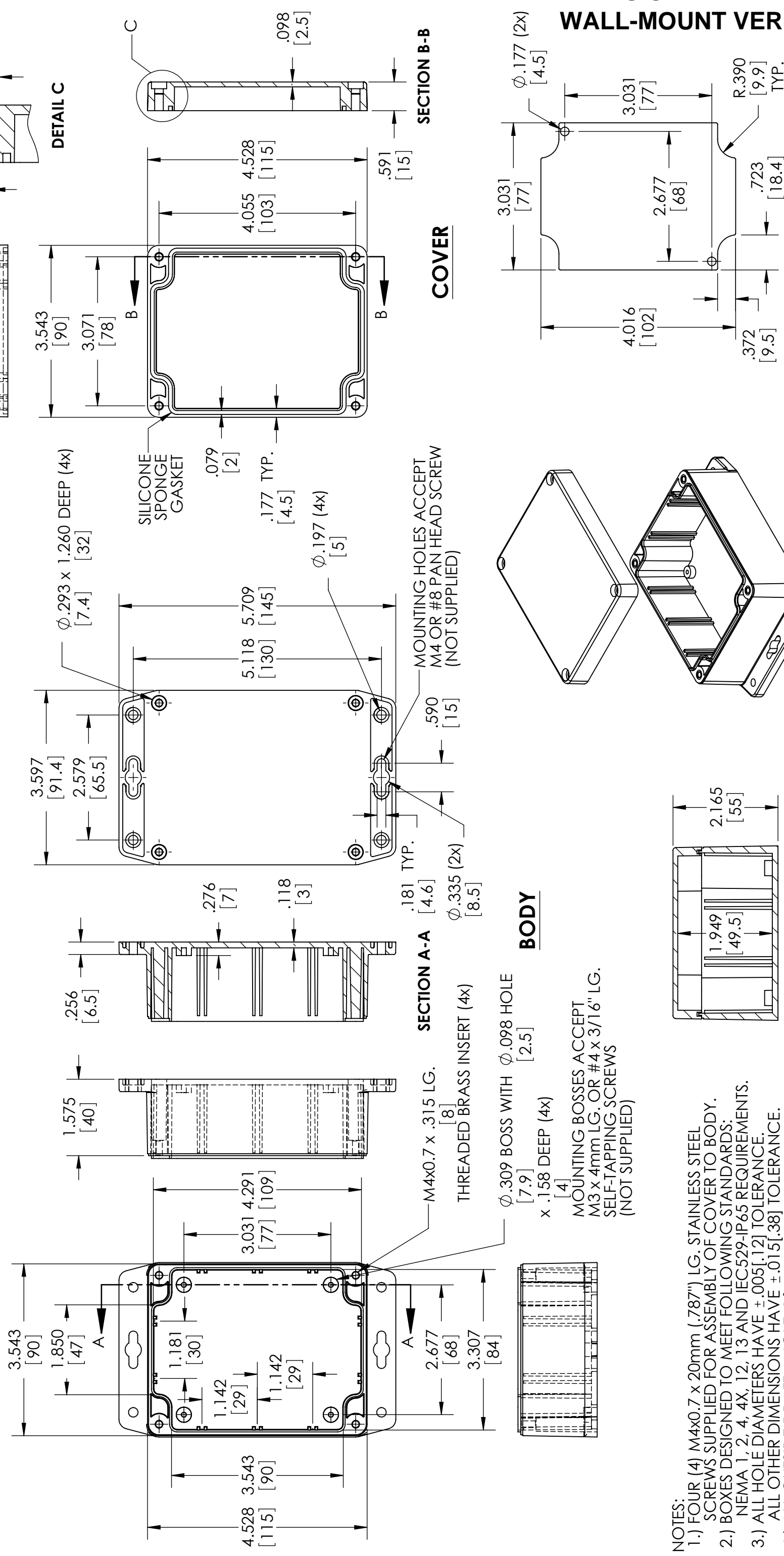
<sup>1</sup> The RRF-D and RRF-W are designed for applications where the EtherMeter® is one of the endpoints. If an EtherMeter is not to be part of the application, it is the responsibility of the user to verify compatibility.

<sup>2</sup> See the Compatibility Matrix at [scadmetrics.com](http://scadmetrics.com) for full compatibility details.

<sup>3</sup> The RRF is rated for the following environmental conditions:  
Temperature: -30C to +85C. Relative Humidity: 5% to 95%, Non-Condensing

<sup>4</sup> The RRF-W is not wet-pit-compatible unless potted by user.

MATERIAL & FINISH:  
 (-MB SUFFIX PART NO.) POLYCARBONATE UL94-HB, UV STABILIZED, SERVICE TEMPERATURE RANGE: -40°C TO +120°C, LIGHT GRAY BODY & COVER.  
 (-CMB SUFFIX PART NO.) SAME AS -MB EXCEPT CLEAR COVER.  
 (-DGMB SUFFIX PART NO.) ABS UL94-HB, SERVICE TEMPERATURE RANGE: -40°C TO +80°C, DARK GRAY BODY & COVER.



## DIMENSIONAL DRAWINGS WALL-MOUNT VERSION

SUGGESTED PC BOARD  
LAYOUT

- NOTES:
- 1.) FOUR (4) M4x0.7 x 20mm (.787") LG. STAINLESS STEEL SCREWS SUPPLIED FOR ASSEMBLY OF COVER TO BODY.
  - 2.) BOXES DESIGNED TO MEET FOLLOWING STANDARDS:  
NEMA 1, 2, 4, 4X, 12, 13 AND IEC529-IP65 REQUIREMENTS.
  - 3.) ALL HOLE DIAMETERS HAVE  $\pm 0.005$ [.12] TOLERANCE.  
ALL OTHER DIMENSIONS HAVE  $\pm 0.015$ [.38] TOLERANCE.
  - 4.) ALL OUTSIDE DRAFT ANGLE: 1°  
ALL INSIDE DRAFT ANGLE: 1/2°

# DIMENSIONAL DRAWINGS

